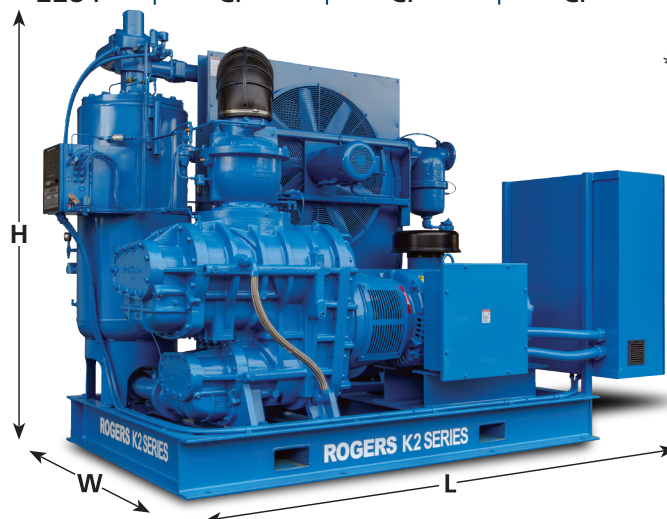


ROGERS® K2 Series

K2 Series Performance Data and Dimensions



Model	Motor Horsepower	Flow (ACFM)	Length (inches)	Width (inches)	Height (inches)	A/C Weight (lbs.)	W/C Weight (lbs.)
K2-100-100	100	590	118	74	76	5300	5000
K2-100-125	100	524	118	74	76	6400	5000
K2-125-100	125	716	125	80	95	6700	5900
K2-125-125	125	654	125	80	95	6700	5900
K2-125-150	125	576	125	80	95	6700	5900
K2-150-100	150	863	125	80	95	6700	6200
K2-150-125	150	767	125	80	95	6700	6200
K2-150-150	150	688	125	80	95	6700	6200
K2-200-100	200	1124	137	80	98	9000	8400
K2-200-125	200	991	137	80	98	9000	8400
K2-200-150	200	923	137	80	98	9000	8400
K2-250-100	250	1449	137	80	98	10500	10000
K2-250-125	250	1313	137	80	98	10500	10000
K2-250-150	250	1136	137	80	98	10500	10000
K2-300-100	300	1688	137	86	99	10900	10600
K2-300-125	300	1549	137	86	99	10900	10600
K2-300-150	300	1412	137	86	99	10900	10600
K2-350-100	350	1987	129*	93*	104*	10200	10600
K2-350-125	350	1814	129*	93*	104*	10200	10600
K2-350-150	350	1645	129*	93*	104*	10200	10600
K2-400-100	400	2243	129*	93*	104*	14000	14300
K2-400-125	400	2065	129*	93*	104*	14000	14300
K2-400-150	400	1864	129*	93*	104*	14000	14300
K2-450-100	450	2495	129*	93*	104*	14200	14500
K2-450-125	450	2314	129*	93*	104*	14200	14500
K2-450-150	450	2063	129*	93*	104*	14200	14500
K2-500-100	500	2621	CF*	CF*	CF*	CF	CF
K2-500-125	500	2463	CF*	CF*	CF*	CF	CF
K2-500-150	500	2284	CF*	CF*	CF*	CF	CF



*Remote air cooler.
Dimensions 11'L x 8'W x 8'H, 4200 lbs
CF - Consult Factory

rogers-kseries.com

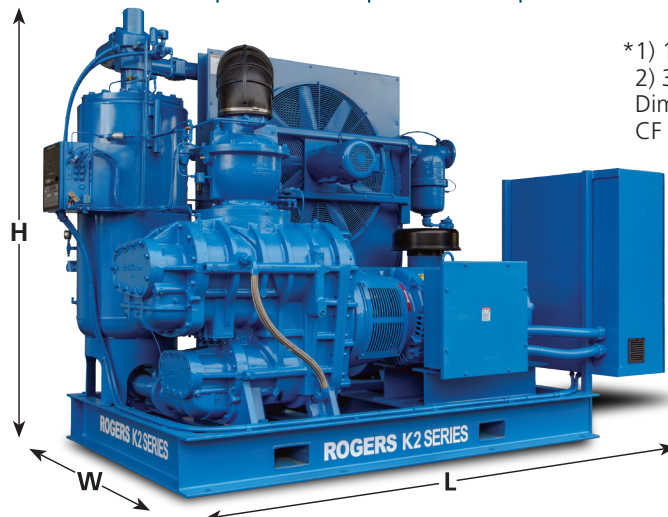
Air delivery in accordance with ISO-9300 and ISO-1217. All data subject to change without notice.
Allow at least 36" service clearance around assembly and 42" of clearance in front of electrical panels.

ROGERS® K2V Series

K2V Series Performance Data and Dimensions



Model	Motor Horsepower	Flow (ACFM)		Length (inches)	Width (inches)	Height (inches)	A/C Weight (lbs.)	W/C Weight (lbs.)
		Max	Min					
K2V-100-100	125	564	167	118	74	76	5500	5300
K2V-100-125	125	509	152	118	74	76	6700	5300
K2V-125-100	150	673	199	125*	80*	95*	6700	6200
K2V-125-125	150	608	183	125*	80*	95*	6700	6200
K2V-125-150	150	546	164	125*	80*	95*	6700	6200
K2V-150-100	200	865	256	125*	80*	95*	6700	6200
K2V-150-125	200	803	241	125*	80*	95*	6700	6200
K2V-150-150	200	717	216	125*	80*	95*	6700	6200
K2V-200-100	250	1108	373	137*	80*	98*	9000	8400
K2V-200-125	250	992	334	137*	80*	98*	9000	8400
K2V-200-150	250	910	306	137*	80*	98*	9000	8400
K2V-250-100	300	1360	423	137*	80*	98*	10500	10000
K2V-250-125	300	1225	391	137*	80*	98*	10500	10000
K2V-250-150	300	1108	354	137*	80*	98*	10500	10000
K2V-300-100	350	1599	498	137*	86*	99*	10900	10600
K2V-300-125	350	1449	463	137*	86*	99*	10900	10600
K2V-300-150	350	1315	420	137*	86*	99*	10900	10600
K2V-350-100	400	1793	553	129*	93*	104*	10500	10000
K2V-350-125	400	1599	510	129*	93*	104*	10500	10000
K2V-350-150	400	1433	457	129*	93*	104*	10500	10000
K2V-400-100	450	2016	649	129*	93*	104*	14000	14300
K2V-400-125	450	1838	581	129*	93*	104*	14000	14300
K2V-400-150	450	1669	528	129*	93*	104*	14000	14300
K2V-450-100	500	2243	721	129*	93*	104*	14200	14500
K2V-450-125	500	1981	637	129*	93*	104*	14200	14500
K2V-450-150	500	1810	582	129*	93*	104*	14200	14500
K2V-500-100	600	2621	843	CF*	CF*	CF*	CF	CF
K2V-500-125	600	2332	750	CF*	CF*	CF*	CF	CF
K2V-500-150	600	2083	670	CF*	CF*	CF*	CF	CF



*1) 125 HP and greater - VFD shipped loose
 *2) 350 HP and greater - Remote air cooler.
 Dimensions 11'L x 8'W x 8'H, 4200 lbs
 CF - Consult Factory

rogers-kseries.com

Air delivery in accordance with ISO-9300 and ISO-1217. All data subject to change without notice.
 Allow at least 36" service clearance around assembly and 42" of clearance in front of electrical panels.